

A Self-guided Tour
of the
International Headquarters
of the

***Worldwide
Church of God***
and
Ambassador Foundation
Pasadena, California



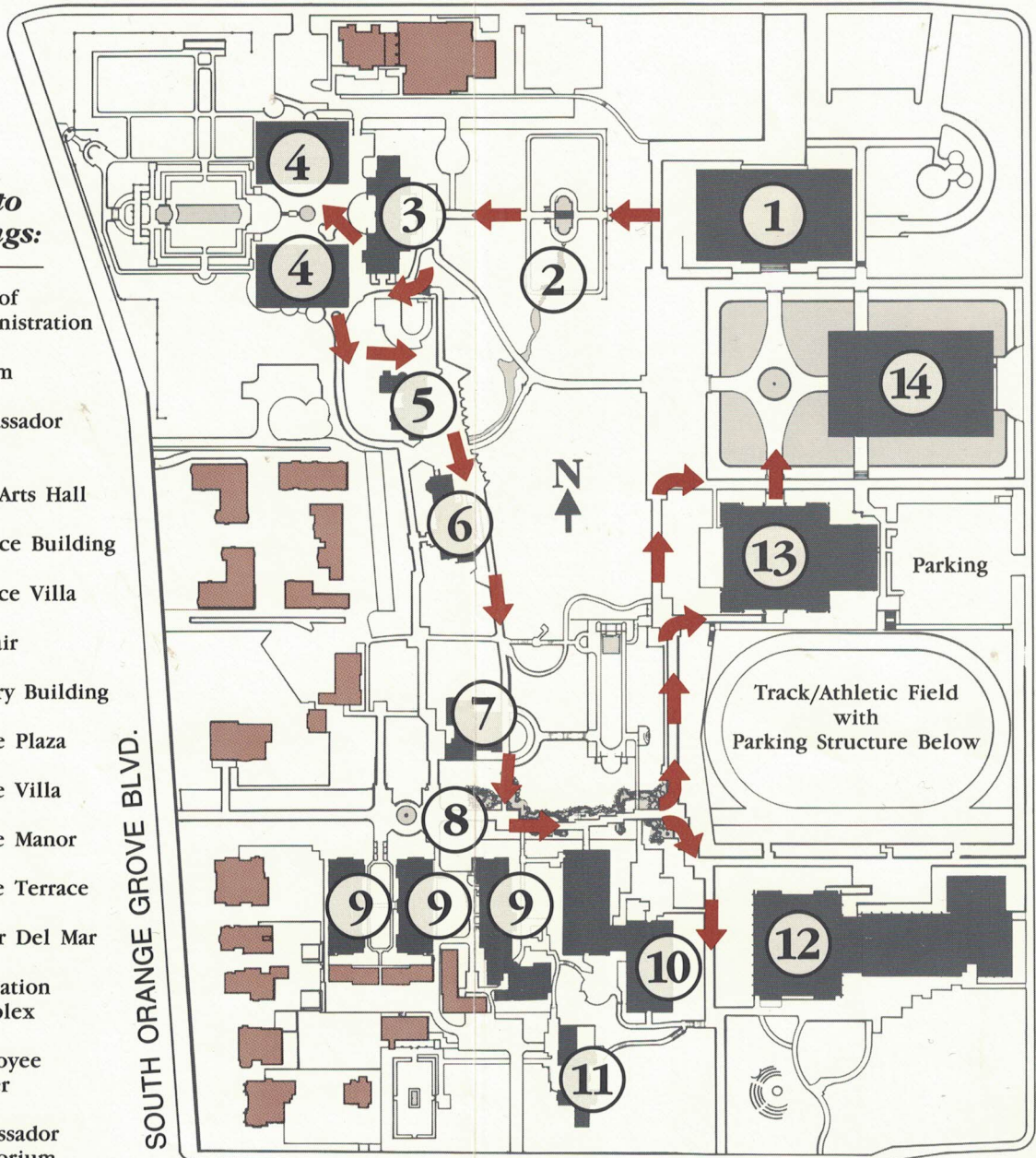
WELCOME to the international headquarters of the Worldwide Church of God and Ambassador Foundation. This brochure will help you identify each major building and give you a capsule history of the facilities. The numbers next to each heading inside correspond to the numbers on the tour map. The tour route is circular and begins at the Hall of Administration (*above*), but you may start at any point along the route and take as long as you like.

Your Tour Map

WEST GREEN ST.

Guide to Buildings:

1. Hall of Administration
2. Stream
3. Ambassador Hall
4. Fine Arts Hall and Science Building
5. Terrace Villa
6. Mayfair
7. Library Building
8. Grove Plaza
9. Grove Villa and Grove Manor
10. Grove Terrace
11. Manor Del Mar
12. Recreation Complex
13. Employee Center
14. Ambassador Auditorium



SOUTH ORANGE GROVE BLVD.

SOUTH ST. JOHN AVE.

DEL MAR BLVD.

and Guide to Buildings:

1. Hall of Administration

The Hall of Administration (*pictured on the front panel*) was completed in 1969 and features an open-air design with light wells rising through its four stories.

The facilities model located in the Hall of Administration lobby was built in 1971 to help visualize plans for expansion. This is a good place to orient yourself to the grounds before beginning your tour.

2. The Stream

The small pool beneath the arched bridge near Ambassador Hall (*below*), is the terminus of a narrow, man-made stream completed in 1959. The water is circulated from the lower pool, which was part of the original estate, to the hilltop. Imperial Koi fish swim in the deeper pools.

3. Ambassador Hall

Ambassador Hall (*below*), completed in 1908, was the former home of multimillionaire Hulett C. Merritt and is famous for its rare and beautiful woods — many of them irreplaceable today.

Continued on other side



Ambassador College acquired the building in 1956. The magnificent wood surfaces were refinished and the upper level was extensively remodeled for classroom use. Further remodeling took place in 1967 during the construction of the Loma D. Armstrong Center adjacent to Ambassador Hall. At that time the west porch was replaced by the stately white columned portico and "Y" shaped stairway.

To the west is the exquisite formal Italian sunken garden, also a part of the original Merritt estate. The pools and fountains were installed by the College in the early 1960s. The modern sculpture at the west end of the pool is by George Hall.

4. The Fine Arts Hall and Science Building

The Fine Arts Hall (*below, left*) and the Science Building (*below, right*), adjacent to Ambassador Hall (*center*), were originally named the Loma D. Armstrong Academic Center after the Ambassador College founder's late wife, Loma Dillon Armstrong (1891-1967). The twin buildings, which once housed the main classroom facilities of the College, are now used for administrative offices. O.K. Earl Company began constructing the two buildings adjacent to Ambassador Hall in March 1967. They were completed about one year later.

The main feature of the Fine Arts Hall is the 274-seat recital hall with a small stage. The building also houses a lecture room seating over 100, offices and music rehearsal rooms. In the lobby are bronze sculptures of violinist Yehudi Menuhin and conductor Sir Thomas Beecham, both by English sculptor David Wynne.



5. Terrace Villa

This Mediterranean-style building (*left*) was designed by architect Walter C. Holland for Mr. Stillman B. Jamison, who built it as his home in 1925. Later used as a boarding house, the property was purchased by the College in 1958, converted to a student residence and renamed Terrace Villa. Notice the intricate, hand-painted scroll-work beneath the eaves.



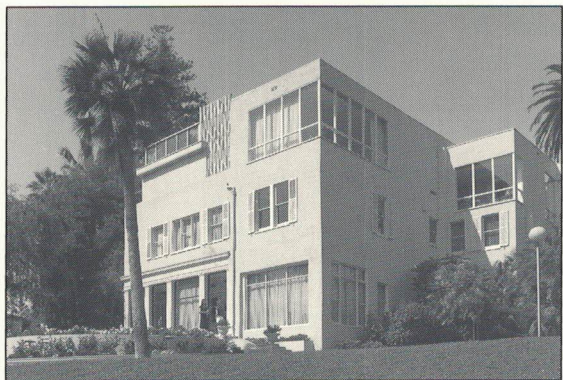
6. Mayfair

Frederick Roehrig designed this English Tudor-style home (*above*), for O.S.A. Sprague. Built in 1903 and later sold to several consecutive owners, it too was converted to a boarding house. Until completion of the Student Center, Mayfair served as the student activity center and dining hall; and most recently as a women's residence.

7. The Library Building

This mansion (*below*) was designed by the Kowski architectural firm in 1897 for Newton Claypool and was redesigned in 1922 by Myron Hunt, the architect who designed the original Huntington Hotel in Pasadena and the Pasadena Public Library building. The original two-and-one-quarter-acre estate also included an eight-room cottage and stables.

The College recognized that this building was more institutional than residential and developed the facility for classrooms, recording studios, offices and printing equipment.

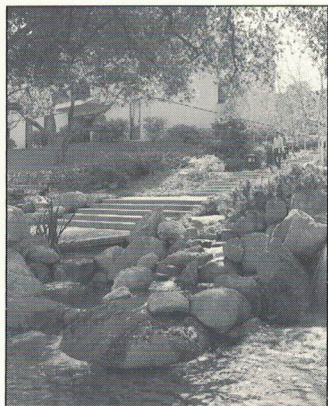


From the Library building, continue south across the bridge west of Grove Plaza.

8. Grove Plaza

It had long been planned to replace the former Grove Street with a walkway. The completed project (*right*) is more elaborate than the concept depicted on the 1971 facilities model. In the center of the plaza is a bronze fountain sculpture by David Wynne called "Circling Birds." The sculpture rotates clockwise while the pool water flows counter-clockwise, creating an illusion of flight.

The man-made stream has 2,000 rocks and boulders which are strategically placed to replicate a natural mountain stream. The spring arises near the library and tumbles over 33 waterfalls and meanders through 35 pools on its way to the bottom of the hill.



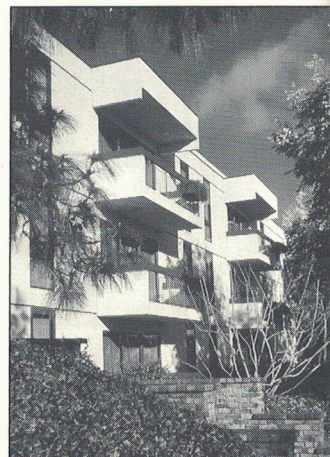
9. Grove Villa and Grove Manor

South of Grove Plaza are three Spanish-style structures originally designed as luxury apartments. The two western buildings, constructed in 1927, are Grove Villa East and West (*above*). Grove Manor, the largest of the three, was built in 1928. In 1962 the Church purchased the three buildings and converted them to student housing two years later.

Continue down the steps to Grove Terrace.

10. Grove Terrace

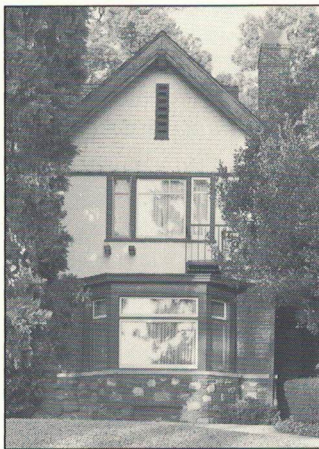
Also south of Grove Plaza is Grove Terrace (*right*), originally an Ambassador College men's residence, so named because it stands at the former intersection of Grove Street and Terrace Drive. Grove Terrace features two three-story wings separated by lounges, a weight room in the west wing and a rooftop patio. Grove Terrace was constructed in 1968.



As you reach the bottom of the steps, turn south to Manor Del Mar.

11. Manor Del Mar

Lewis J. Merritt, father of Hulett C. Merritt, originally owned this house. It was designed by H. W. Thomson and built by the South Spring Company in 1908. Purchased in 1956 shortly before the acquisition of Ambassador Hall, this home also contains many fine woods, although not as elaborate as Ambassador Hall. The house (*right*) is similar to Theodore Roosevelt's "summer White House," Sagamore Hill, at Oyster Bay, New York.



Retrace your steps to the north end of Grove Terrace and turn east to view the Physical Education Complex.

12. The Recreation Complex

In 1964 Pasadena-based O.K. Earl Corporation began building the gymnasium (*right*) and natatorium.

Rafe Afleck, an American contemporary artist, sculpted the expressionistic, welded-steel sculpture located on the north exterior wall of the gymnasium. The work is titled "Birds in Flight."

Opposite the gymnasium is the sixth-mile track and playing field which also serves as the roof of a 300-car underground parking garage. The playing field is artificial turf, manufactured by Monsanto Corporation, backed with 5/8-inch-thick cloud-cell foam padding.



13. Employee Center

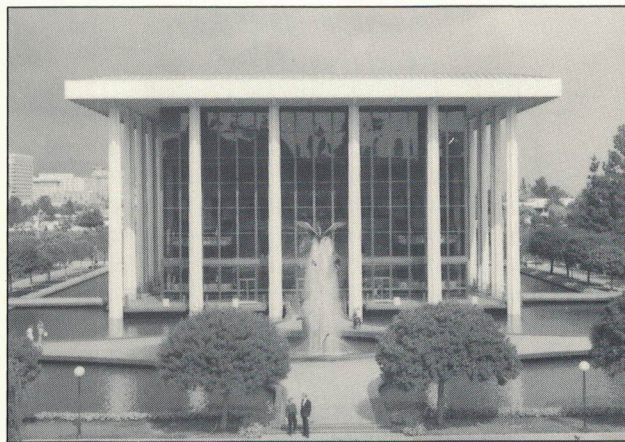
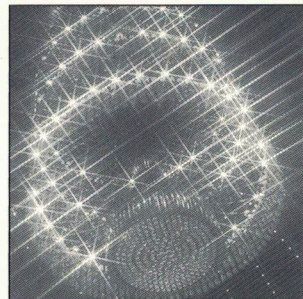
William J. Moran Company began building the former Student Center shortly after the Recreation Complex was completed. The building (*not pictured*) was finished in early 1966.

14. Ambassador Auditorium

Since its completion in 1974, Ambassador Auditorium (*below*) has gained an international reputation as a prestigious house for the performing arts. Thousands have enjoyed performances by artists such as Arthur Rubinstein, Vladimir Horowitz, Herbert von Karajan and the Berlin Philharmonic, Kiri Te Kanawa and many more.

Materials and furnishings from around the world adorn the Auditorium. The black granite which outlines the veranda, walkways and bridges is from Angola; the main surfaces are Norwegian Sandfiord gray granite. The emerald green granite used on the exterior walls is from Brazil and was cut and polished in Italy.

The grand lobby and lower lounge walls, columns and stairs are covered with rose onyx from Turkey and Iran, one of the largest installations of its kind. The walls in the main seating areas are of Brazilian rosewood with vertical inlays of Burmese teakwood. The two Baccarat candelabra in the grand lobby, each containing 802 pieces of cut crystal, are from France. The seamless carpet contains an abstract design of the reflections of the crystals in the grand lobby chandelier. The 33-foot three-tiered bronze chandelier (*inset*) contains 1390 crystals imported from Germany and weighs more than one ton.



We hope you have enjoyed your tour and that you will visit us again.

About the

Worldwide Church of God

THE WORLDWIDE Church of God, active in 120 countries and territories, maintains its international headquarters in Pasadena, California. Not affiliated with other religious organizations, the Church does not publicly appeal for funds, involve itself in politics nor actively seek new members. The Church embraces two broad purposes: to proclaim the Gospel of the Kingdom of God; and to teach God's way of life to those who are interested, as outlined in the Bible.

The Worldwide Church of God was established in 1933 in Eugene, Oregon. About 135,000 people attend Church services each week. The Church emphasizes the Bible as its guide to doctrine, which leads its members to keep a seventh-day Sabbath and the annual Holy Days described in the Bible.

The Church publishes the *Plain Truth* magazine and produces the top-ranked *World Tomorrow* television program.

The Church maintains an undergraduate academic program on the Ambassador College campus in Big Sandy, Texas. Until the spring of 1990, the Church also maintained an Ambassador College campus at Church headquarters in Pasadena. Most of the buildings along the tour route were used for the academic program.

About the

Ambassador Foundation

THE AMBASSADOR Foundation was established in 1975 by the Worldwide Church of God to promote international understanding and cooperation. The Foundation conducts its activities in such a way that it transcends political, religious and ethnic complexities. As a result, the Foundation has had programs in Bangladesh, Belgium, China, Egypt, England, Guatemala, Haiti, Israel, Japan, Jordan, Kenya, Nepal, the Philippines, Sri Lanka, the Soviet Union, the Syrian Arab Republic, the United States and Zaire.

The Foundation presents an internationally-acclaimed performing arts season each year; most performances are held in the beautiful Ambassador Auditorium, which you will see on your tour.

General Information

Location: The international headquarters for the Worldwide Church of God and Ambassador Foundation is located at 300 West Green Street in Pasadena, California and is conveniently accessible via all local freeways and is only minutes from downtown Los Angeles.

From the Pasadena Freeway (110) Exit at Orange Grove Boulevard, turn left and proceed six traffic lights to Green Street. Turn right onto Green Street, then right onto St. John Avenue to the parking lot at 169.

From the Ventura Freeway (134) Exit at Orange Grove Boulevard and proceed straight onto Colorado Boulevard. Turn right at the first traffic light onto St. John Avenue to the parking lot at 169.

From the east on the Foothill Freeway (210) Exit at Orange Grove Boulevard via the Ventura Freeway. Turn left onto Orange Grove, then left at the second traffic light onto Green Street and right onto St. John Avenue to the parking lot at 169.

From the west on the Foothill Freeway (210) For Ambassador Auditorium: Exit at Colorado Boulevard and proceed straight on St. John Avenue to the parking lot at 169.

Free Parking at 169 St. John Avenue. Additional free parking in the adjacent parking structure at 205 St. John Avenue.

From the parking lot, follow the walkways north, past Ambassador Auditorium, to the Hall of Administration, where the tour route begins.

Photography: Non-commercial photography for personal use is permitted throughout the grounds.

Spike Heels are not permitted in any of the buildings.

Pets and Picnics are not permitted anywhere on the grounds.

For Information: Call (818) 304-6123.